

Boardwalks



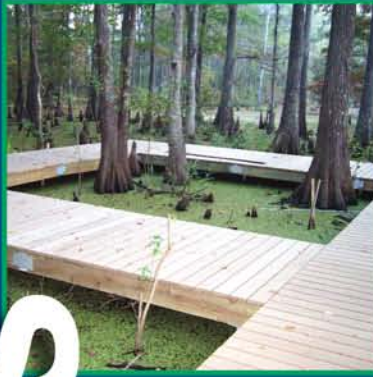
**Building a solid
foundation**

**The solution you can
depend on**



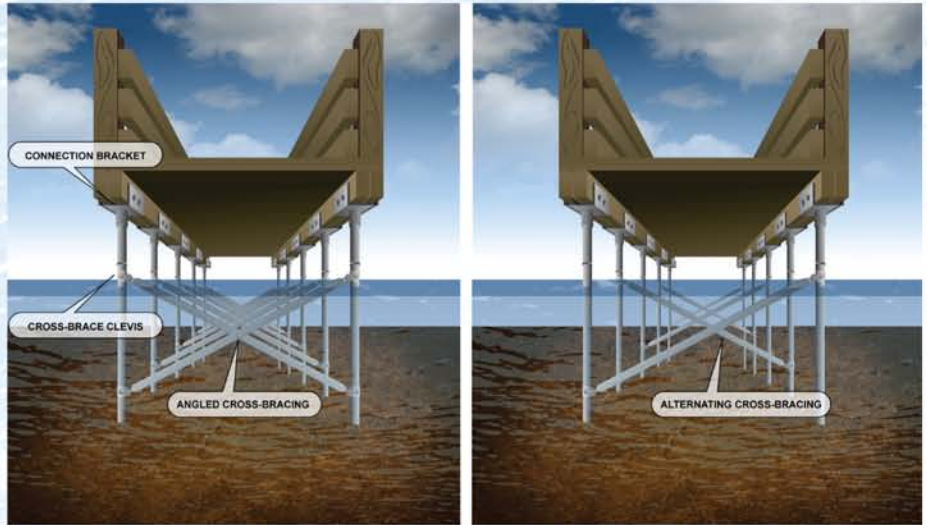
Building Solid Foundations

Boardwalks



MacLean Dixie HFS™ Boardwalks

MacLean Dixie offers a broad range of steel foundation piles used to support boardwalks in environmental sensitive areas. We offer many time proven solutions with experience in anchoring since the 1920's. It is important the product and installation meet stringent requirements to ensure the quality and workmanship of the manufactured product and installation is performed by qualified and certified technicians to ensure the foundation will perform as expected.



RCS (Round Corner Square) or pipe pile shafts are used depending on best fit for site conditions and for a cost effective solution. Cross bracing can be added for increase stability.

Why MacLean Dixie is the best choice.

There are many advantages to choosing MacLean Dixie to install your boardwalks. MacLean Dixie's boardwalks are easy to install. Unlike building a concrete pathway through these natural parks, our boardwalks provide an easy way to enjoy nature without disturbing it. The height of the boardwalks allows wild life to pass underneath, without being disturbed. The boardwalk can also be removed years later, without damage to the environment. All parts are hot dip galvanized to ASTM A123 for long term protection.



Building Solid Foundations



The flexibility of the helical piles permits the boardwalks to be built to best fit the environment, such as passing around tress.

Consistent quality testing.

MacLean Dixie has qualified relevant products to meet the IBC (International Building Codes) ICC-ES AC358 Acceptance Criteria for Helical Foundation Systems and Devices (ESR 3032). This should be important criterion when selecting the supplier to protect your investment for years to come.



Previously installed walkway sections are used to support installing equipment without disturbing the environment.

Find out more at
www.MacLeanDixie.com.

Visit our website for more information and technical specifications on all of our products.

Features and Benefits:

- Installed with minimum impact to sensitive environments
- Does not require building a road - helical piles are installed and boardwalk completed as pile installation advances
- Installed with no vibration
- Can be installed manually, with light weight equipment
- Broad product offering - Available in RCS (Round Corner Square) or pipe piles to meet whatever field conditions are encountered
- Available for immediate use - no concrete or grout to cure
- Hot dip galvanized to ASTM A123 for long term protection
- Manufactured with over 90% recycled material
- Contributes to a green environment



MacLean Dixie.

Built on a solid foundation.

MacLean Dixie is part of MacLean-Fogg, a diversified international manufacturing company. A result of the acquisition and merger of Joslyn and Dixie, two prominent soil anchor manufacturers, MacLean Dixie is now one of the leading suppliers of steel deep foundation systems for use in residential, commercial and marine applications. Our comprehensive product line for residential and commercial applications includes engineered solutions for tension, compression and structural stabilization in many different soils.

Quality that is second to none.

Why do installers and engineers across the nation choose MacLean Dixie products time and time again? Perhaps it is because our quality standards and rigorous testing procedures ensure that our products are second to none.

Materials meet strict ASTM standards.

We can verify the chemical composition of every lot of steel back to the original mill that produced it. So we know that the chemistry, physical and dimensional properties are in accordance to ASTM and our stringent standards.

State-of-the-art fabrication.

With one of the largest manufacturing facilities in the industry, we're equipped to turn products around faster, more efficiently and most cost effectively.

Visit www.MacLeanDixie.com for more information and technical support.



Building Solid Foundations



ISO 9001:2008
Certification QSR-938

AC308 Approved
ESR-3032

Member

11411 Addison Avenue
Franklin Park, IL 60131
Phone: 847.455.0014 Fax: 847.455.0029